



Ontario

Ontario Municipal Board  
Commission des affaires municipales de l'Ontario

O 920137  
O 920138  
Z 910016  
S 930051

SCHEDULE "A"

AMENDMENT NO. 26  
TO  
THE OFFICIAL PLAN  
OF  
THE TOWN OF PELHAM

TABLE OF CONTENTS

PART A - PREAMBLE

Introduction to the Official Plan Amendment.

- i) Purpose
- ii) Location
- iii) Basis

PART B - THE AMENDMENT

The Amendment which will be incorporated into the Town of Pelham Official Plan.

NOTE:

Part A is an explanatory section providing information regarding the Amendment and does not form a part of the body of the Official Plan Amendment. Only part B constitutes the actual Amendment to the Official Plan of the Town of Pelham.

## PART A - PREAMBLE

## PURPOSE

The purpose of this amendment is to:

1. To redesignate the lands from Good General Agricultural to Urban Residential.
2. To permit the development of a residential subdivision on the subject lands.

## LOCATION

The subject site consists of approximately 20 acres (8.1 hectares) of property in the southwest corner of Fonthill. The legal description of the site is part of Lot 3, Concession 10, in the Town of Pelham.

## BASIS

The basis of this amendment is to:

1. Provide for an urban boundary expansion that does not constitute a significant loss of prime agricultural land.
2. There is a demonstrated need for the proposed development. One of the major goals of the Provinces Housing Policy Statement is to ensure municipalities have an adequate supply of land for housing. A minimum of ten years supply is recommended. The Town of Pelham is the only Municipality in the Region that does not have a minimum 10 year supply of land to accommodate additional housing units.

## PART B - THE AMENDMENT

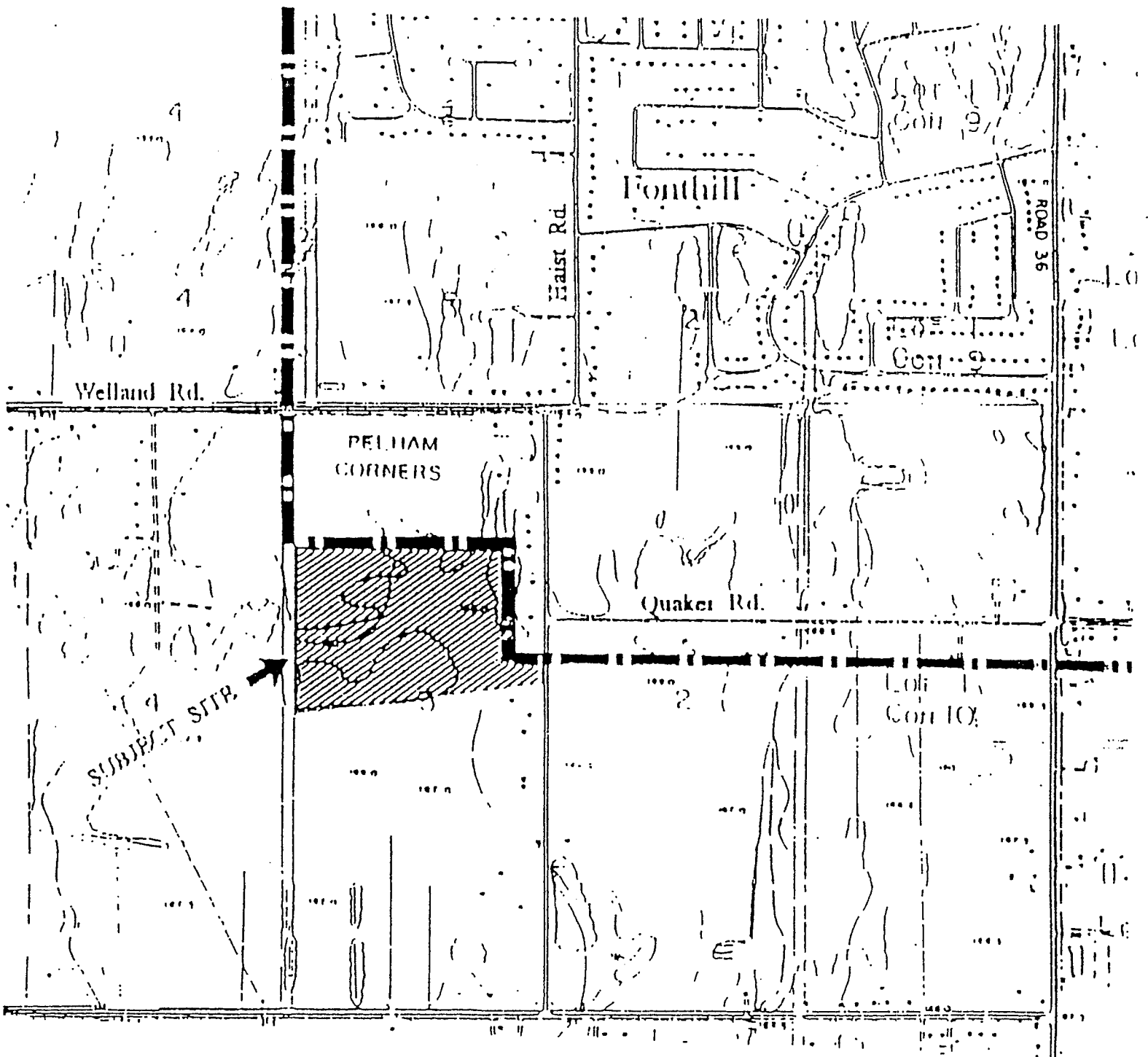
1. The Official Plan for the Town of Pelham is amended as follows:

"The area indicated on the map attached hereto entitled Schedule A to Amendment is changed to 'Urban Residential'".

O 920137  
O 920138  
Z 910016  
S 930051

SCHEDULE A

Urban Boundary Expansion  
South West Corner of Fonthill  
Town of Pelham



LEGEND

- URBAN AREA BOUNDARY
- Change to "Urban"
- "Residential" from
- "Agricultural"

